

Kin

3003


66% Polyester, 34% Polyester (Postconsumer Recycled)

Upholstery

Product specification

Name	Kin
Number	3003
Product Category	Upholstery
Material Type	Woven
Content	66% Polyester, 34% Polyester (Postconsumer Recycled)
Finish	Stain Resistant (without PFAS)
Backing	Acrylic
Width	56 inches (142 cm)
Weight	14.50 ounces/linear yard (450 grams/linear meter)
Average Bolt Size	30 yards
Shown Railroaded	No
Origin	United States
Warranty	5 years
Introduction Date	06/10/2021
Optional Added Backing (Upcharge Applies)	Fluid Barrier, Heavy Acrylic Backing, Medium Acrylic Backing

Performance

Abrasion	100,000 Wyzenbeek double rubs
Flammability	CA TB 117-2013
Lightfastness	40 hours
Performance Standards	
Cleaning Code	Water-based/Solvent (WS)
Approved Disinfectants	Bleach 10:1 Clorox® Disinfecting Wipes Isopropyl Alcohol, 70% Lysol® All-Purpose Cleaner Lysol® Disinfectant Spray Lysol® Disinfecting Wipes (all scents) Oxivir® 1 Oxivir® 1 Wipes Oxivir® Tb Oxivir® Tb Wipes Sani-Cloth® AF3 Germicidal Disposable Wipes Sani-Cloth® Bleach Germicidal Disposable Wipes Super Sani-Cloth® Germicidal Disposable Wipes Virex® II 256

Design

Pattern Type	Dot, Geometric, Organic
Pattern Scale	Large
Repeat	V 23.00 inches x H 14.75 inches (V 58.42 cm x H 37.47 cm)

Sustainability

Certifications & Programs

Healthier Hospitals, HPD,
LEED, Mindful Materials, No
Prop 65 warning required,
SCS Indoor Advantage
Gold, WELL

Material Health

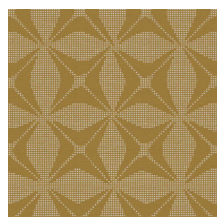
Low VOC, No
Antimicrobials, No Flame
Retardants, No PFAS, No
PVC



Patina
3003-401



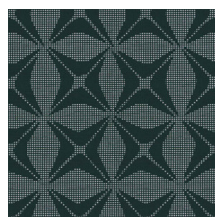
Cobalt
3003-402



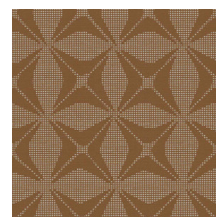
Avocado
3003-501



Topiary
3003-502



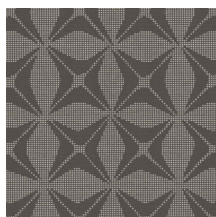
Mallard
3003-503



Thatch
3003-701



Pebble
3003-801



Mason
3003-802