


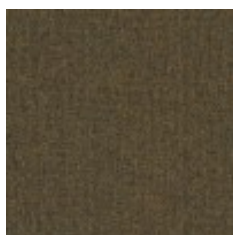
Use	Upholstery, Panel Fabrics
Content	100% Polyester (Solution Dyed)
Finish	Silicone (Supreen)
Backing	Fluid Barrier (Supreen), Polyurethane
Cleaning	Bleach (10:1), Water-based/Solvent (WS)
Weight	15.5 ounces Yard
Width	54 inches (137 cm)
Shown Railroaded	No
Flammability	ASTM E 84 Unadhered Class A, CA TB 117-2013
Abrasion	500,000 Wyzenbeek double rubs (CD)
Lightfastness	40 hours
ACT	
Standards & Certifications	Healthier Hospitals, HPD, LBC Red List Compliant, Mindful Materials, Prop 65 Compliant
Material Chemistry	No Antimicrobials, No Flame Retardants, No PFAS, No PVC
LEED	Material Ingredients
Sustainable Logistics	Ships Carbon Neutral
Warranty	5 years
Origin	China



Muclin
3025-101



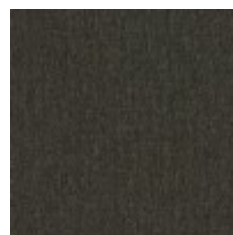
Linen
3025-102



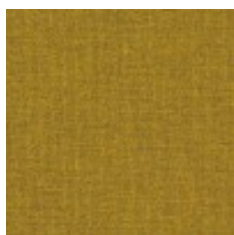
Earth
3025-103



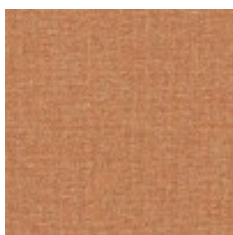
Forge
3025-104



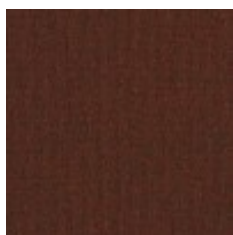
Roast
3025-105



Glow
3025-201



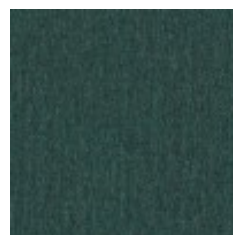
Salmon
3025-301



Spiced
3025-302



Lake
3025-401



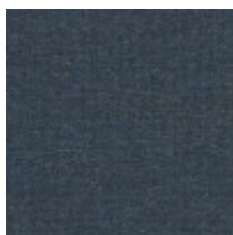
Cape
3025-402



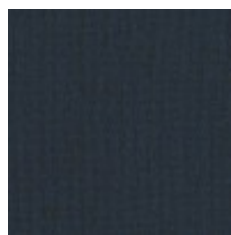
Seastone
3025-403



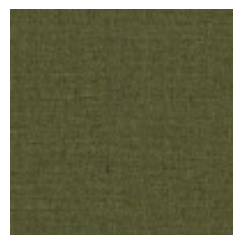
Solstice
3025-404



Maritime
3025-405



Celestial
3025-406



Moss
3025-501



Topiary
3025-502



Grappa
3025-601



Parchment
3025-801



Graystone
3025-802



Pepper
3025-803



Mason
3025-804



Charcoal
3025-805



Night
3025-806