



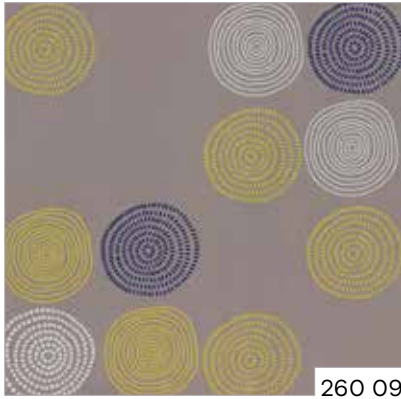
Farbabweichungen drucktechnisch bedingt. | Slight deviations in colour due to printing process.



drapilux Schmitz-Werke GmbH + Co. KG.
48282 Emsdetten / Hansestraße 87 / Germany / 48270 Emsdetten
T 02572.927 0 / F 02572.927 445 / M info@drapilux.com
Box 1243 / 48270 Emsdetten / Germany
T 49 2572.927 0 / F 49 2572.927 445 / M export@drapilux.com
www.drapilux.com

drapilux

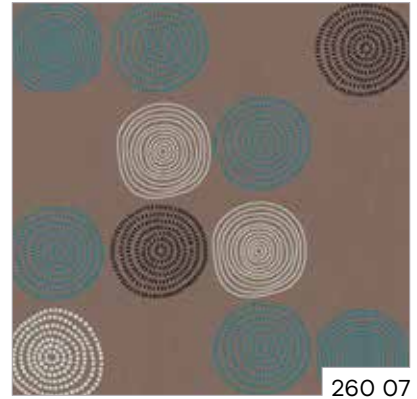
drapilux 260 Serie 0, 10, 40



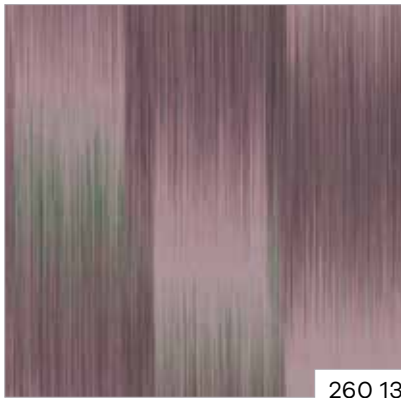
260 09



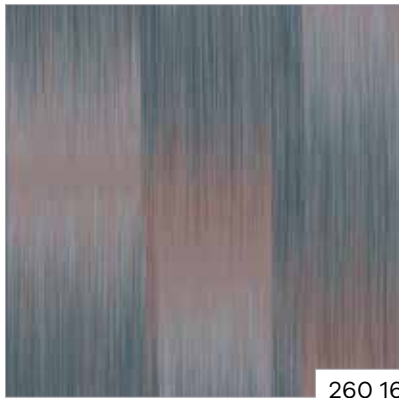
260 05



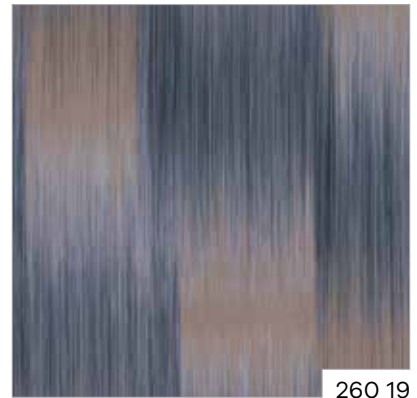
260 07



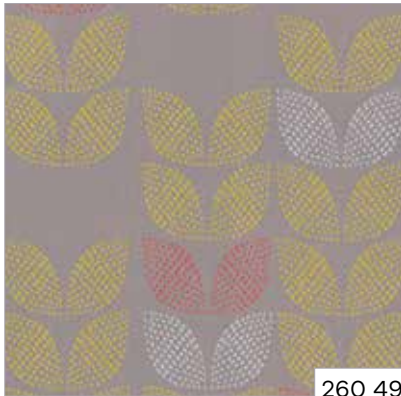
260 13



260 16



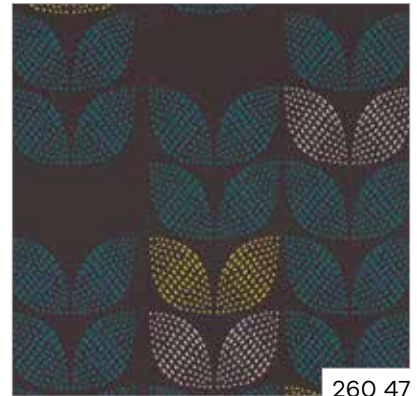
260 19



260 49



260 45



260 47

Technische Daten:

DIN 4102 B 1
M 1 NON FEU (B+F+E)
CLASSE 1 (I)
BS 5867 (GB)
IMO RES. MSC.307
(88)-(2010 FTP CODE)

Material:

100% Polyester (FR)
◇ ca. 310 cm
ca. 245 g/m²

Rapport:

Serie 0: ◇ ca. 50 cm x <> ca. 50 cm
Serie 10: ◇ ca. 98 cm x <> ca. 98 cm
Serie 40: ◇ ca. 99 cm x <> ca. 80 cm

Martindale: ca. 20.000
DIN EN ISO 12947-2

Pilling: 4
DIN EN ISO 12945-2



0736

Oeko-Tex Standard 100
A96-0071 Hohenstein
HTTI

drapilux

eine Marke der Schmitz-Werke
a brand of Schmitz-Werke
une marque de la société Schmitz-Werke
una marca di Schmitz-Werke

drapilux