



Farbabweichungen drucktechnisch bedingt. | Slight deviations in colour due to printing process.



flammstop



air

drapilux

Schmitz-Werke GmbH + Co KG | 48282 Emsdetten | Hansestraße 87 | Germany
Postfach 48270 Emsdetten | **T** 02572.927 0 | **F** 02572.927 445 | **M** info@drapilux.com

Box 1243 | 48270 Emsdetten | Germany | **T** 49 2572.927 0 | **F** 49 2572.927 445

M export@drapilux.com | www.drapilux.com

drapilux

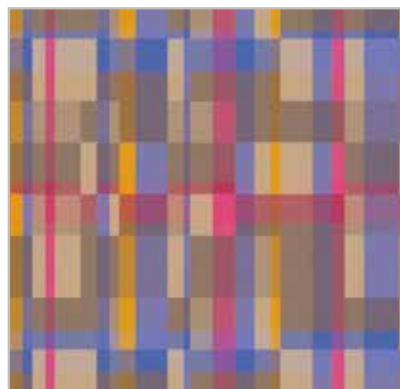
drapilux 229



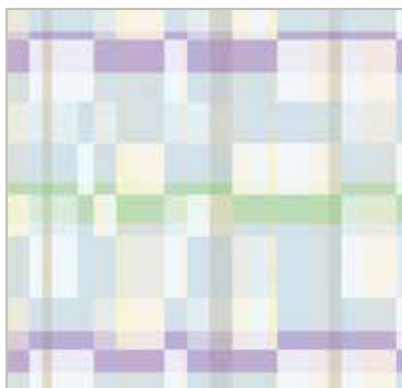
229 41



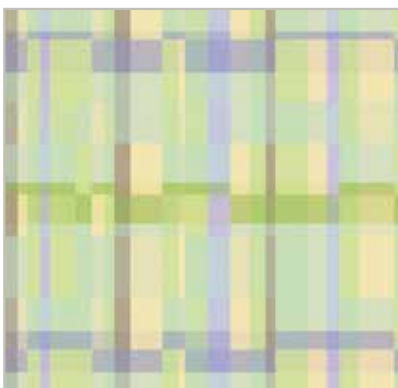
229 43



229 44



229 45



229 46



229 47



229 49

Technische Daten:

DIN 4102 B1
M1 Non Feu (B+F+E)
Classe 1 (I)
BS 5867 (GB)
EN 13 773 Classe 1
IMO Res. A.471 (XII)

Material:

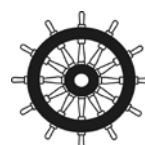
100% Polyester (FR)
< > ca. 140 cm
ca. 225 g/m²

Rapport:

ca. 48 x 35 cm

Martindale ca. 25.000 T.
DIN EN ISO 12947-2

Pilling ca. note 3
DIN EN ISO 12945-2



drapilux

eine Marke der Schmitz-Werke
a brand of Schmitz-Werke
une marque de la société Schmitz-Werke
una marca di Schmitz-Werke

drapilux