



Farbabweichungen drucktechnisch bedingt. | Slight deviations in colour due to printing process.



flammstop



air



flächenvorhang

drapilux

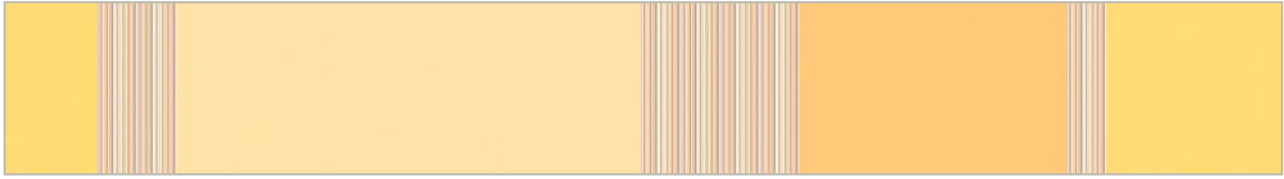
Schmitz-Werke GmbH + Co KG | 48282 Emsdetten | Hansestraße 87 | Germany
Postfach 48270 Emsdetten | **T** 02572.927 0 | **F** 02572.927 445 | **M** info@drapilux.com

Box 1243 | 48270 Emsdetten | Germany | **T** 49 2572.927 0 | **F** 49 2572.927 445

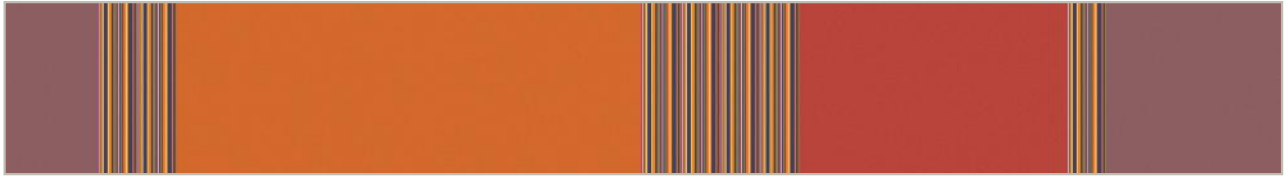
M export@drapilux.com | www.drapilux.com

drapilux

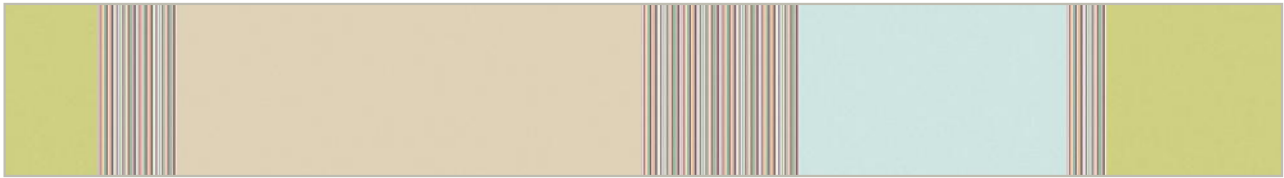
drapilux 190



190 61



190 63



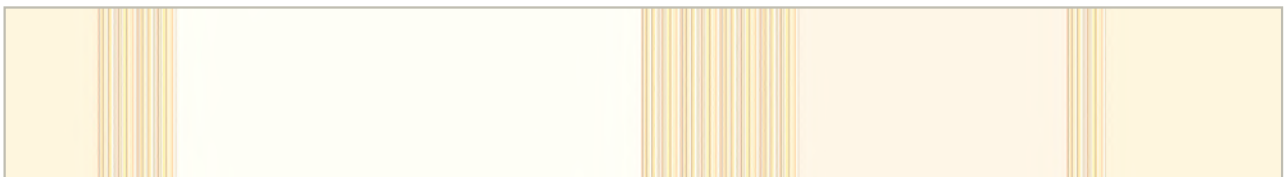
190 65



190 67



190 68



190 69

Technische Daten:

DIN 4102 B1
M1 Non Feu (B+F+E)
Classe 1 (I)
BS 5867 (GB)
EN 13 773 Classe 1
IMO Res. A.471 (XII)

Material:

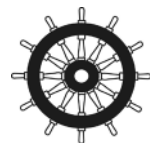
100% Polyester (FR)
< > ca. 140 cm
ca. 235 g/m²

Rapport:

< > ca. 140 cm

Martindale ca. 30.000 T.
DIN EN ISO 12947-2

Pilling ca. note 3
DIN EN ISO 12945-2



drapilux

eine Marke der Schmitz-Werke
a brand of Schmitz-Werke
une marque de la société Schmitz-Werke
una marca di Schmitz-Werke

drapilux