



Farbabweichungen drucktechnisch bedingt. | Slight deviations in colour due to printing process.



flammstop



air



flächenvorhang

## drapilux

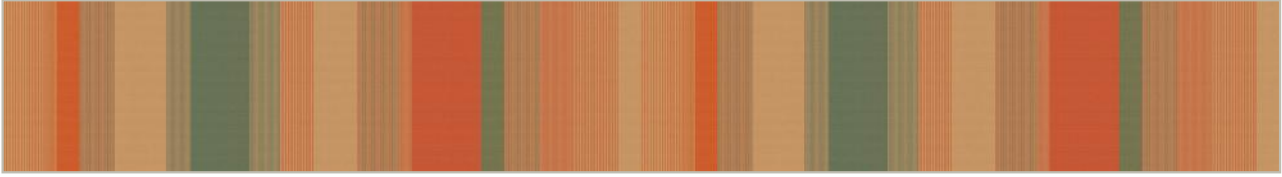
Schmitz-Werke GmbH + Co KG | 48282 Emsdetten | Hansestraße 87 | Germany  
Postfach 48270 Emsdetten | **T** 02572.927 0 | **F** 02572.927 445 | **M** info@drapilux.com

Box 1243 | 48270 Emsdetten | Germany | **T** 49 2572.927 0 | **F** 49 2572.927 445

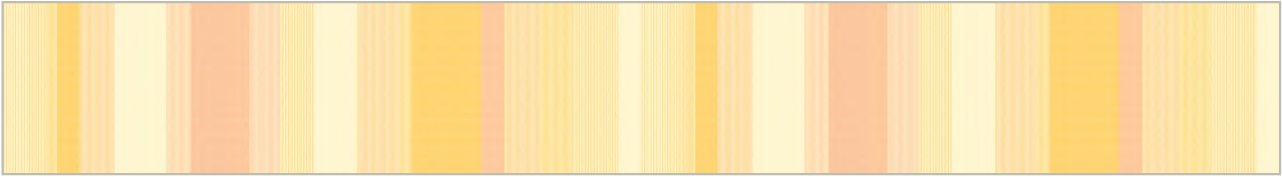
**M** export@drapilux.com | [www.drapilux.com](http://www.drapilux.com)

# drapilux

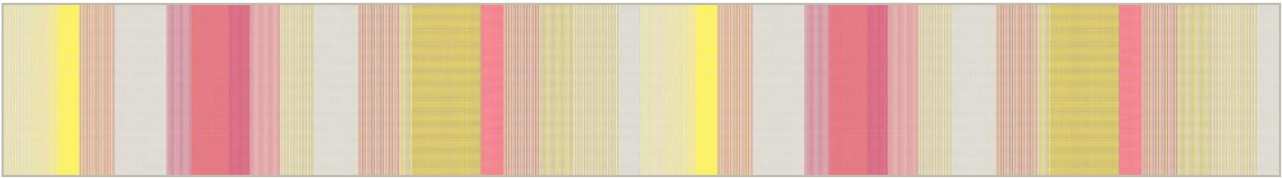
# drapilux 153



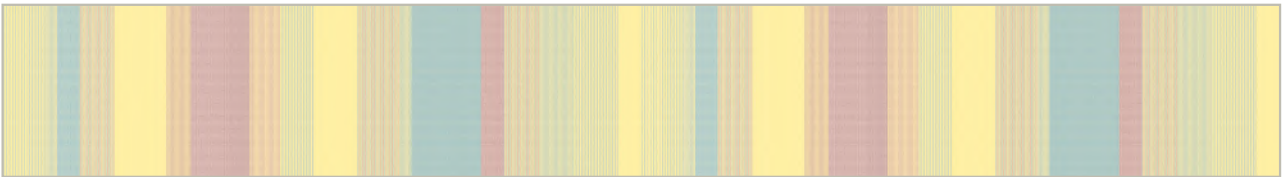
153 10



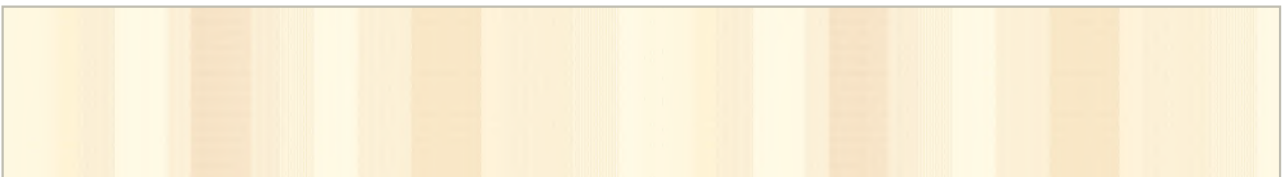
153 11



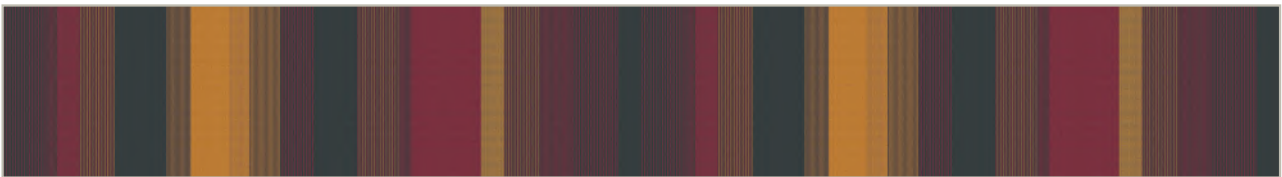
153 13



153 14



153 17



153 18

## Technische Daten:

DIN 4102 B1  
M1 Non Feu (B+F+E)  
Classe 1 (I)  
BS 5867 (GB)  
EN 13 773 Classe 1  
IMO Res. A.471 (XII)

## Material:

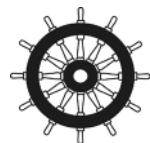
100% Polyester (FR)  
< > ca. 140 cm  
ca. 255 g/m<sup>2</sup>

## Rapport:

< > ca. x 70 cm

Martindale ca. 20.000 T.  
DIN EN ISO 12947-2

Pilling ca. note 3  
DIN EN ISO 12945-2



## drapilux

eine Marke der Schmitz-Werke  
a brand of Schmitz-Werke  
une marque de la société Schmitz-Werke  
una marca di Schmitz-Werke

# drapilux