



Farbabweichungen drucktechnisch bedingt. | Slight deviations in colour due to printing process.



flammstop



air



bioaktiv

drapilux

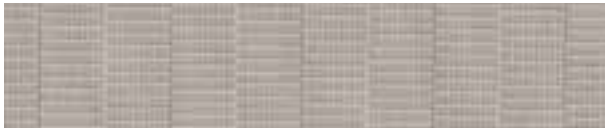
Schmitz-Werke GmbH + Co KG | 48282 Emsdetten | Hansestraße 87 | Germany
Postfach 48270 Emsdetten | **T** 02572.927 0 | **F** 02572.927 445 | **M** info@drapilux.com

Box 1243 | 48270 Emsdetten | Germany | **T** 49 2572.927 0 | **F** 49 2572.927 445

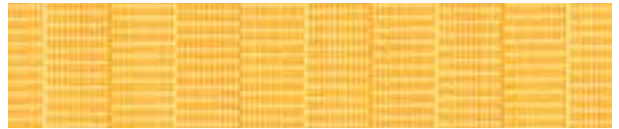
M export@drapilux.com | www.drapilux.com

drapilux

drapilux 105



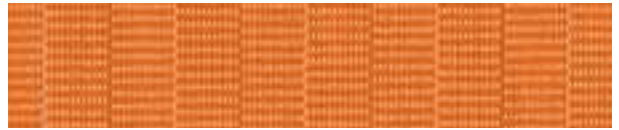
105 57



105 41



105 67



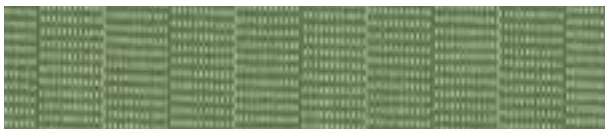
105 42



105 47



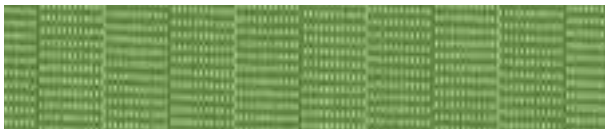
105 43



105 66



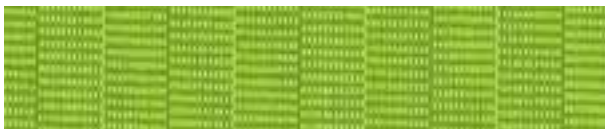
105 48



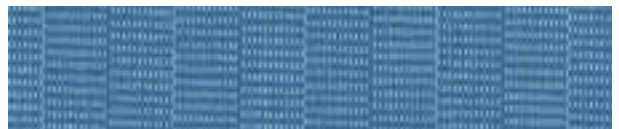
105 56



105 55



105 46



105 45

Technische Daten:

DIN 4102 B1
M1 Non Feu (B+F+E)
Classe 1 (I)
BS 5867 (GB)
EN 13 773 Classe 1
IMO Res. A.471 (XII)

Material:

100% Polyester (FR)
↔ ca. 140 cm
ca. 260 g/m²

Rapport:

↔ ca. 2 cm



drapilux

eine Marke der Schmitz-Werke
a brand of Schmitz-Werke
une marque de la société Schmitz-Werke
una marca di Schmitz-Werke

drapilux