



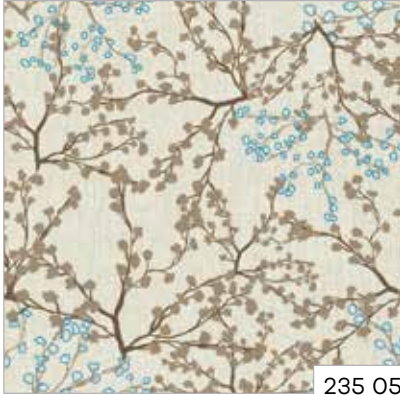
Farbabweichungen drucktechnisch bedingt. | Slight deviations in colour due to printing process.



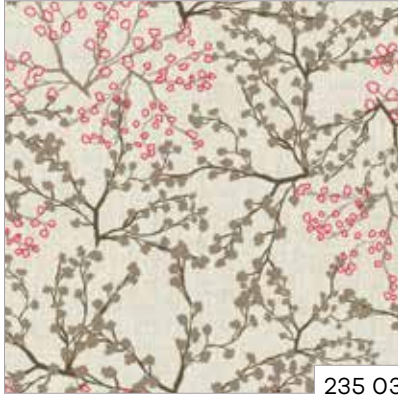
drapilux Schmitz-Werke GmbH + Co. KG.
48282 Emsdetten / Hansestraße 87 / Germany / 48270 Emsdetten
T 02572.927 0 / F 02572.927 445 / M info@drapilux.com
Box 1243 / 48270 Emsdetten / Germany
T 49 2572.927 0 / F 49 2572.927 445 / M export@drapilux.com
www.drapilux.com

drapilux

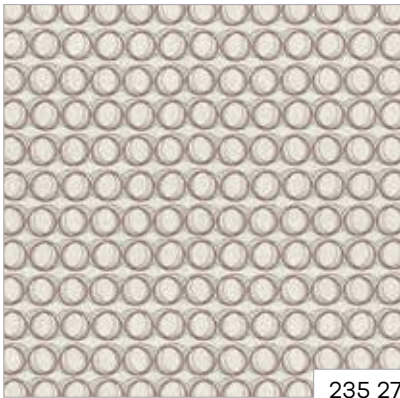
drapilux 235 Serie 0, 20



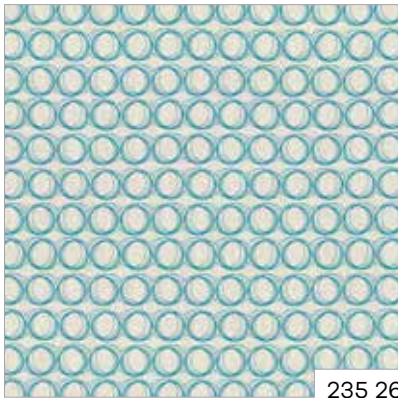
235 05



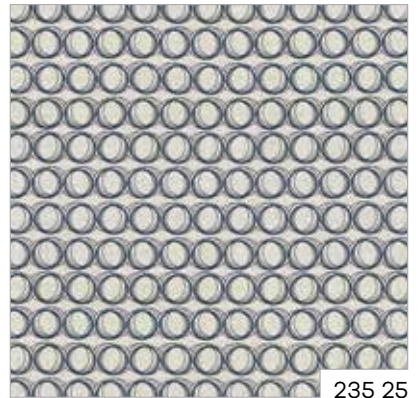
235 03



235 27



235 26



235 25

Technische Daten:

DIN 4102 B 1
M 1 NON FEU (B+F+E)
CLASSE 1 (I)
BS 5867 (GB)
EN 13 773 CLASS 1
IMO RES. MSC.307
(88)-(2010 FTP CODE)

Material:

100% Polyester (FR)
◇ ca. 300 cm
ca. 485 g/m²

Rapport:

Serie 0: ◇ ca. 49 cm x <> ca. 49 cm
Serie 20: ◇ ca. 24 cm x <> ca. 39 cm

Martindale: ca. 50.000
DIN EN ISO 12947-2

Pilling: 4-5
DIN EN ISO 12945-2



0736

Oeko-Tex Standard 100
A96-0071 Hohenstein
HTTI

drapilux

eine Marke der Schmitz-Werke
a brand of Schmitz-Werke
une marque de la société Schmitz-Werke
una marca di Schmitz-Werke

drapilux