

Farbabweichungen drucktechnisch bedingt. | Slight deviations in colour due to printing process.



drapilux

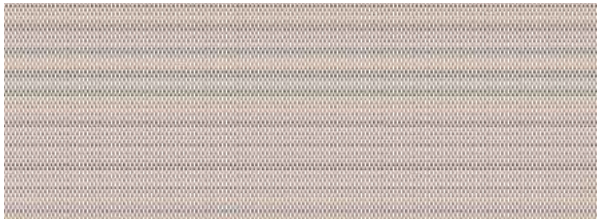
Schmitz-Werke GmbH + Co KG | 48282 Emsdetten | Hansestraße 87 | Germany
Postfach 48270 Emsdetten | **T** 02572.927 0 | **F** 02572.927 445 | **M** info@drapilux.com

Box 1243 | 48270 Emsdetten | Germany | **T** 49 2572.927 0 | **F** 49 2572.927 445

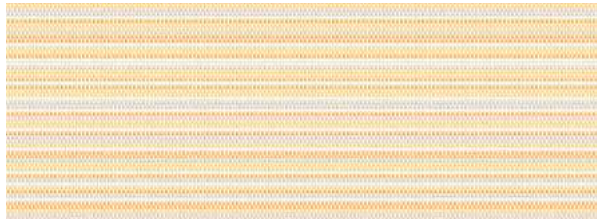
M export@drapilux.com | www.drapilux.com

drapilux

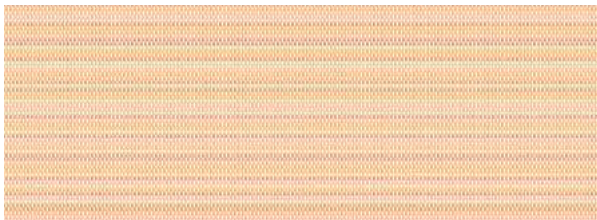
drapilux 226



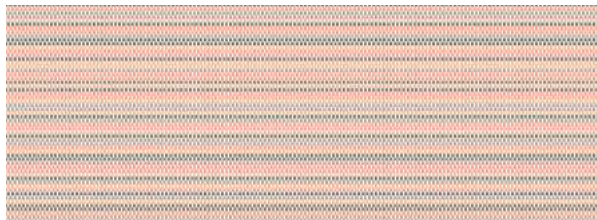
226 30



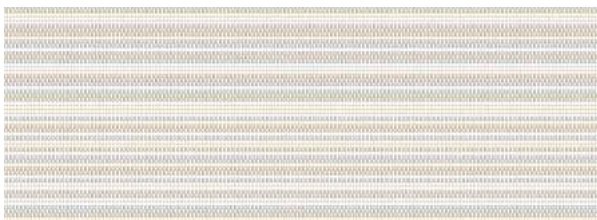
226 31



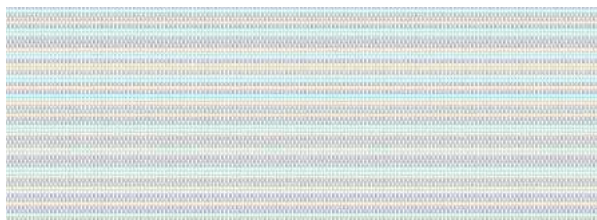
226 32



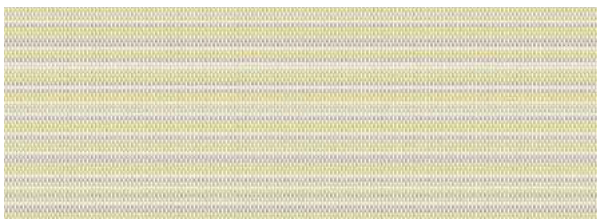
226 33



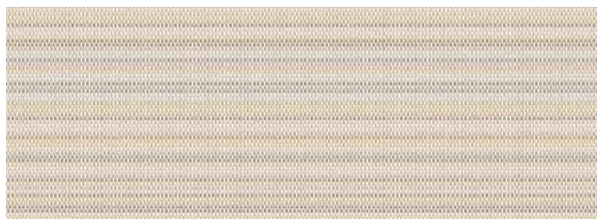
226 34



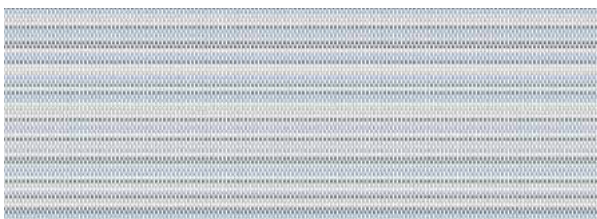
226 35



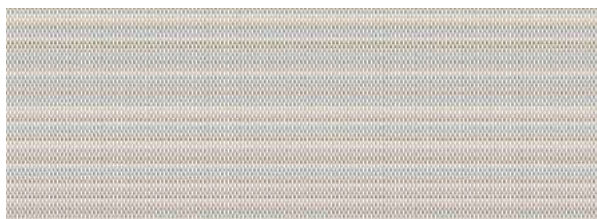
226 36



226 37



226 38



226 39

Technische Daten:
DIN 4102 B1
M1 Non Feu (B+F+E)
Classe 1 (I)
BS 5867 (GB)
EN 13 773
IMO RES. MSC.307
(88)-(2010 FTP CODE)

Material:
100% Polyester (FR)
∩ ca. 300 cm
ca. 180 g/m²

Rapport:
- x 10 cm

Martindale ca. 60.000 T.
DIN EN ISO 12947-2

Pilling ca. note 3
DIN EN ISO 12945-2



Öko-Tex Standard 100
ACB - Prüf-Nr. A96-0071
FI Hohenstein

drapilux

eine Marke der Schmitz-Werke
a brand of Schmitz-Werke
une marque de la société Schmitz-Werke
una marca di Schmitz-Werke

drapilux