



Farbabweichungen drucktechnisch bedingt. | Slight deviations in colour due to printing process.



drapilux

Schmitz-Werke GmbH + Co KG | 48282 Emsdetten | Hansestraße 87 | Germany
Postfach 48270 Emsdetten | **T** 02572.927 0 | **F** 02572.927 445 | **M** info@drapilux.com

Box 1243 | 48270 Emsdetten | Germany | **T** 49 2572.927 0 | **F** 49 2572.927 445
M export@drapilux.com | www.drapilux.com

drapilux

drapilux 144 serie 50, 60, 70, 80



144 51



144 53



144 55



144 57



144 59



144 63



144 65



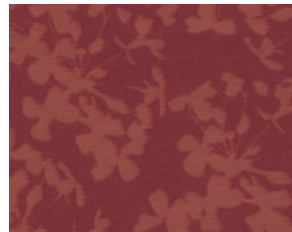
144 67



144 69



144 71



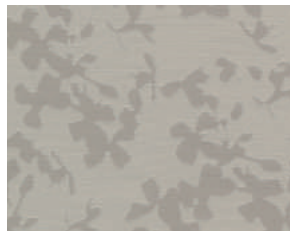
144 73



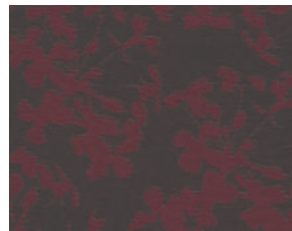
144 75



144 77



144 79



144 87

Technische Daten:
DIN 4102 B1
M1 Non Feu (B+F+E)
Classe 1 (I)
BS 5867 (GB)

Material:
100% Polyester (FR)
↔ ca. 280 cm
ca. 245 g/m²

Rapport Serie 50, 60:
◇ ca. 24 cm x ↔ ca. 37 cm
Rapport Serie 70, 80:
◇ ca. 37 cm x ↔ ca. 37 cm

Martindale: ca. 14.000 T.
DIN EN ISO 12947-2

Pilling: 4
DIN EN ISO 12945-2



Öko-Tex Standard 100
ACB . PrüfNr. A96-0071
FI Hohenstein

drapilux

eine Marke der Schmitz-Werke
a brand of Schmitz-Werke
une marque de la société Schmitz-Werke
una marca di Schmitz-Werke

drapilux