



Farbabweichungen drucktechnisch bedingt. | Slight deviations in colour due to printing process.



drapilux

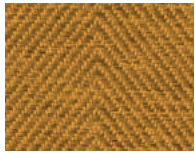
Schmitz-Werke GmbH + Co KG | 48282 Emsdetten | Hansestraße 87 | Germany
Postfach 48270 Emsdetten | **T** 02572.927 0 | **F** 02572.927 445 | **M** info@drapilux.com

Box 1243 | 48270 Emsdetten | Germany | **T** 49 2572.927 0 | **F** 49 2572.927 445

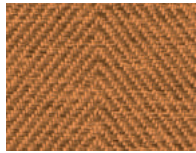
M export@drapilux.com | www.drapilux.com

drapilux

drapilux 139



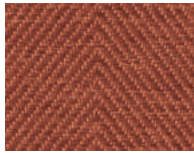
139 01



139 02



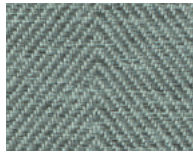
139 03



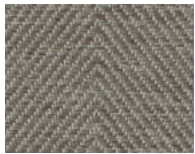
139 04



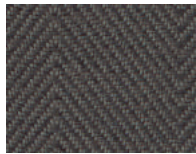
139 05



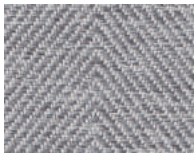
139 06



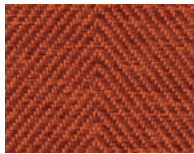
139 07



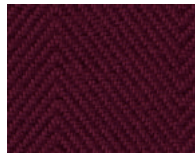
139 08



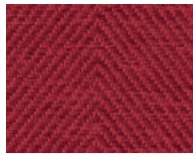
139 09



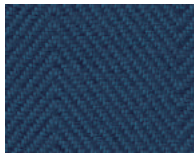
139 12



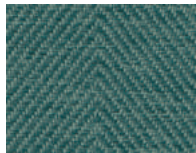
139 13



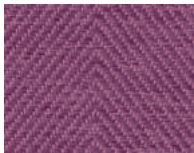
139 14



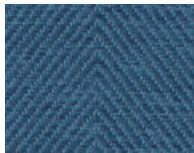
139 15



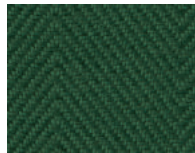
139 16



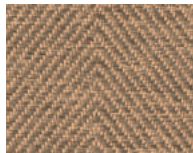
139 24



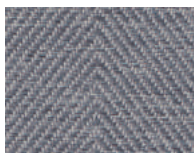
139 25



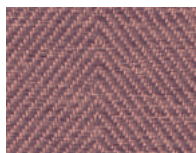
139 26



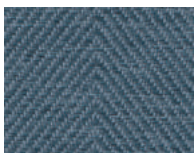
139 27



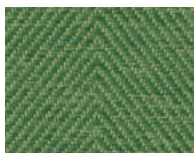
139 28



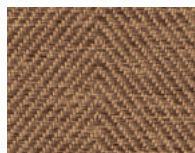
139 34



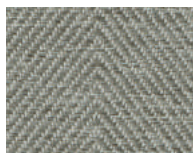
139 35



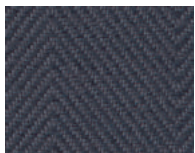
139 36



139 37



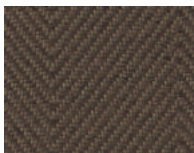
139 38



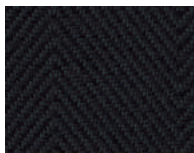
139 45



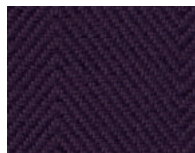
139 46



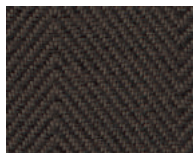
139 47



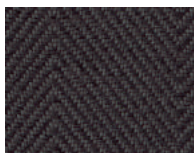
139 48



139 54



139 67



139 77

Technische Daten:

DIN 4102 B1
M1 Non Feu (B+F+E)
Classe 1 (I)
BS 5867 (GB)
EN 13 773
IMO RES. MSC.307
(88)-(2010 FTP CODE)

Material:

100% Polyester (FR)
< > ca. 300 cm
ca. 270 g/m²

Rapport:

< > ca. 3,5 cm

Martindale ca. 70.000 T.
DIN EN ISO 12947-2

Pilling ca. note 4
DIN EN ISO 12945-2



Öko-Tex Standard 100
ACB . Prüf-Nr. A96-0071
FI Hohenstein

drapilux

eine Marke der Schmitz-Werke
a brand of Schmitz-Werke
une marque de la société Schmitz-Werke
una marca di Schmitz-Werke

drapilux